

# Business, Meetings and Conference Venue

Minstead Lodge is the perfect place for meetings, training sessions and conferences. All of our rooms offer the authentic character of a New Forest Lodge, taking you away from the buzz of your regular workplace into a creative, inspiring environment.

With a warm New Forest welcome, all of our guests are offered the following facilities and services throughout the day:

- Unlimited tea and coffee on arrival and throughout the day
- Biscuits and cakes baked in the Lodge kitchens
- Still and sparkling spring water
- Choose from hot and cold lunch menus
- Free Wi-fi
- Overhead data projection, flipchart, tv/dvd
- Shared use of the Long Hall with winter log fire
- Summer break out on the Terrace and Blade Garden

We offer Leadership Training, Team Building and Corporate Volunteering Days within our extensive grounds, with our own training partners or working with your own team.

Our flexible and friendly service ensures that you get the best value out of your time with us.

Discover the opportunities to hold your business meeting, training day or conference in a very beautiful location and experience the unique flavour that only Minstead Lodge can offer.

## The Congleton and Parnell Rooms

Perfect for training and presentations, each room also has a bay window and beautifully hand-carved oak tables.

The Congleton Room has direct access to a private lawn for summer breakout.

Hire of each room can also include shared space in the Long Hall.

### Capacity:

THEATRE STYLE 50 BOARDROOM STYLE 25

HORSESHOE STYLE 20 CAFÉ STYLE 36

5 MINUTES FROM THE M27 IN AN INSPIRATIONAL, TRANQUIL SETTING



The Library



The Parnell Room



The Congleton Room © KN Photography

## The Long Hall

Ideal for business events or private functions. It is a perfect space for corporate customers to meet and greet delegates, have lunch and refreshments and use as informal breakout space during the day.

This beautiful room with original oak panelling and an open log fire during the winter, opens onto the South Terrace for beautiful countryside views and summer breakout.

### Capacity:

NETWORKING EVENTS **110** THEATRE STYLE **110**  
CAFÉ STYLE **75**



PROMOTES YOUR  
CORPORATE SOCIAL  
RESPONSIBILITY  
AGENDA

## The Library

The library's booklined walls and bay window create an excellent atmosphere for smaller meetings and discussions. Breakout space is available in the Long Hall.

### Capacity:

THEATRE STYLE **15** BOARDROOM STYLE **12** CAFÉ STYLE **8**

Contact us for more information and delegate or room rates.

## Room only hire

Room hire from 8am to 5pm

Shared use of Long Hall

Pay as you Go delegate  
lunch menu

Mid morning biscuits and  
afternoon cake – freshly made in  
the Lodge kitchens

Unlimited tea and coffee

From £165 (plus VAT)

# Why Minstead Lodge?

Minstead Lodge is a social enterprise providing catering and hospitality training and work experience to people with learning disabilities. Every room booking supports the enterprise and the wider work of Minstead Trust, which you can find out more about at [www.minsteadtrust.org.uk](http://www.minsteadtrust.org.uk).

## Delegate Package

Your choice of room  
from 8am to 5pm

Shared use of Long Hall

Buffet lunch

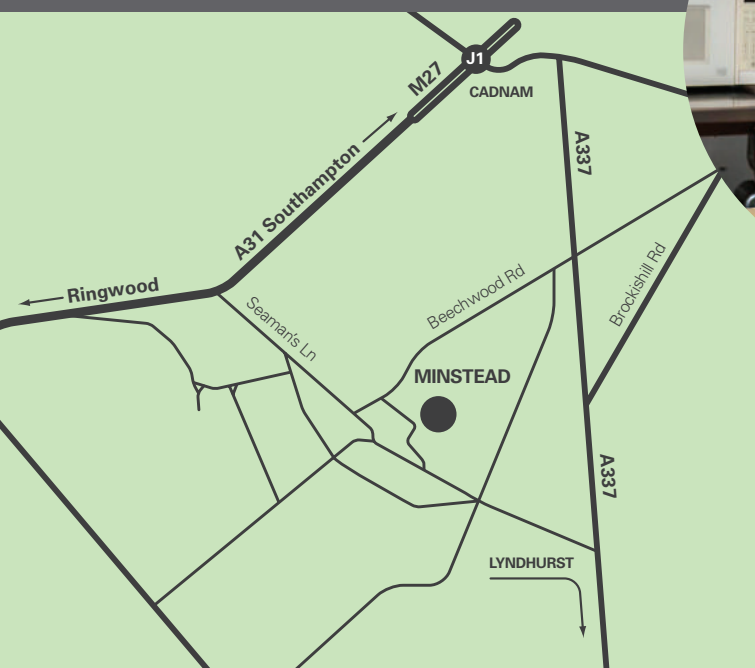
Mid morning biscuits and  
afternoon cake – freshly made in  
the Lodge kitchens

Unlimited tea and coffee

From £27pp (plus VAT)



FREE  
PARKING  
ON SITE



Get in touch to discuss your requirements.

☎ 023 8081 7146

@ [events@minsteadlodge.org.uk](mailto:events@minsteadlodge.org.uk)

Minstead Lodge • Seaman's Lane  
Minstead • Lyndhurst • SO43 7FT



# Corporate Packages and Events at Minstead Lodge

Minstead Lodge is the perfect venue for your team days and special events. Enjoy our idyllic New Forest location where you can feel away from it all in our creative, inspiring environment.

GROUPS FROM 10 – 110

5 MINUTES  
FROM THE  
M27 IN AN  
INSPIRATIONAL,  
TRANQUIL  
SETTING

## Networking Plus at Minstead Lodge

Come and meet other local business professionals at one of our Networking Plus events. Networking Plus offers relaxed and inspiring ways of building your professional network, with a theme and something to take away from each event.

**September 4th 2018:** *Apple picking, pressing and freshly squeezed juice to enjoy.* A really fun way of making contacts – work alongside each other and enjoy the fruits of your labour.

**November 9th 2018 (breakfast meeting):** *You and your team: insights into your team dynamics to improve business performance.* In partnership with Baobab Growth.

**March 6th 2019:** *Your personal networking 'memoir'.* Work alongside Minstead Trust service users to create your own ceramic affirmation, as you network.

PROMOTES YOUR  
CORPORATE SOCIAL  
RESPONSIBILITY  
AGENDA

[www.minsteadtrust.org.uk/events](http://www.minsteadtrust.org.uk/events) for information and bookings.

## Corporate events at Minstead Lodge

Book your corporate event somewhere different this year: we offer Murder Mysteries, Dinner and Entertainment, Quiz Nights, or Fine Dining in our atmospheric Long Hall.

All packages are tailored to your requirements with bespoke quotes to meet your budgets.

For more information please email [events@minsteadlodge.org.uk](mailto:events@minsteadlodge.org.uk) or call 023 8081 7146.



## Inspirational team building

Achieve outstanding business performance the fun, effective and efficient way.

DISCOVER  
YOUR AUTHENTIC  
TEAM



EXPAND YOUR  
COMMUNICATION  
SKILLS



UNLOCK  
YOUR BUSINESS  
POTENTIAL

- Available as a half day activity to follow your business meeting or a full day team building event
- Learn from and about each other in this unique team day
- Fully participative sessions utilising our inspirational venue and with opportunities to work alongside Minstead Trust service users to create your team memoir
- Led by a professional development coach with over 20 years' business team building and leadership experience
- Pre and post event follow up back in the work place
- Delivered in partnership with Baobab Growth [www.baobabgrowth.com](http://www.baobabgrowth.com)



## Corporate volunteering

We offer Team Building Volunteer Days (for between 8 and 40 volunteers) with plenty of practical projects and fundraising challenges. Recently our corporate volunteers have been involved in general grounds maintenance, weeding and painting in the grounds at Minstead Lodge and at Furzey Gardens.

“ We didn't know that clearing the gardens could be such fun (and hard work!). We are struck by the amazing work that the Trust is doing.”

– VOLUNTEER AXA WEALTH

INTERACTIVE  
FUN AND  
MEMORABLE  
ACTIVITIES TO  
SUIT YOUR  
BUSINESS

## Christmas lunch at Minstead Lodge

Book your table for Christmas lunch with the log fire burning in the Long Hall and service with a smile from our hospitality trainees. You won't get a better Feel Good Factor than supporting our work with people with Learning Disabilities this Christmas.

Bookings available for 4th-6th and 11th-13th December 2018.

# Why Minstead Lodge?

Minstead Lodge is a social enterprise providing catering and hospitality training and work experience to people with learning disabilities. Every room booking supports the enterprise and the wider work of Minstead Trust, which you can find out more about at [www.minsteadtrust.org.uk](http://www.minsteadtrust.org.uk).



FREE  
PARKING  
ON SITE



## For all enquires contact:

- ☎ 023 8081 7146
- @ [events@minsteadlodge.org.uk](mailto:events@minsteadlodge.org.uk)
- @ [www.minsteadlodge.org.uk](http://www.minsteadlodge.org.uk)

Minstead Lodge • Seaman's Lane  
Minstead • Lyndhurst • SO43 7FT



# The Story of Minstead Lodge

Minstead Lodge was built around 1832 by Lt Colonel Edward Buckley (first Equerry to the Royal Household) after the farm house on the site burned down.

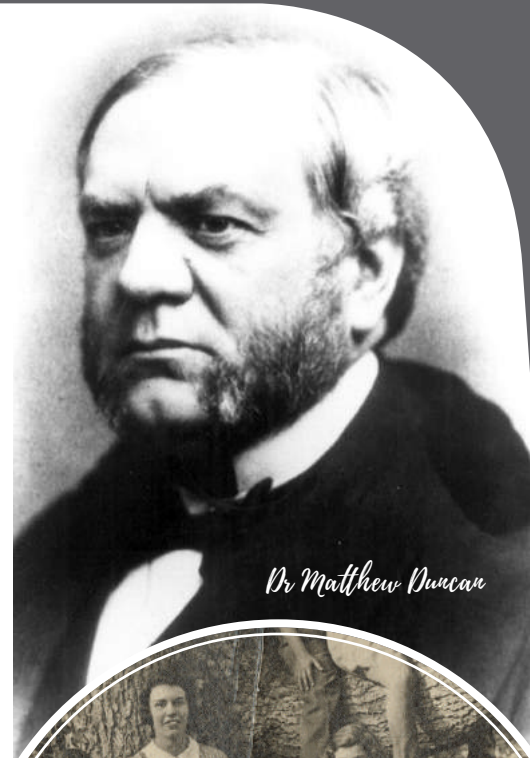
The great oak door is original to the building. The oak panelling and grand staircase are even older than the Lodge, coming originally from a local church.

In 1852 Minstead Lodge was sold to the Preston family and then to the Duncan family. Dr Duncan was a physician to Queen Victoria. It changed hands again in 1921, when it became the home of the Carnegie family.

The 6th Baron Congleton bought the Lodge in 1924 and lived here with his wife and eight children until his death in 1932, when he was succeeded by his son William Parnell.

During the 1920s an east wing was built, making the Lodge much as we see it today. It doubled the size of the Lodge to 40 main rooms including 23 bedrooms.

Lady Congleton was a very active member of the community. She was awarded an MBE in 1941 and was Minstead's first female church warden.



*Dr Matthew Duncan*



1909



*Lady Congleton  
(far left)*

During World War Two, the Lodge became the Headquarters of the 716th Light Composite Royal Army Service Corps, which was involved in the Normandy Landings. There is graffiti on the roof from the soldiers, some of whom came from Canada.



2018



» William Parnell was also greatly admired in the village and was a church warden. He sadly died in a car accident in 1967, when Minstead Lodge was sold to the Ward family and subsequently fell into decline.

In 1974 Minstead Lodge was purchased by Tim Selwood, using money from his brother Peter's Trust fund, after Peter tragically died in a light aircraft accident. Tim, an Anglican priest, had the vision of using the Lodge as a community house.

Tim also owned Furzey gardens, and during this time was responding to local needs by setting up opportunities for 5 or 6 people with learning disabilities to come and work in the gardens. As this work grew, Minstead Lodge became the home of Minstead Trust, which was established in 1986.



Today Minstead Lodge is the base from which we support nearly 200 people with learning disabilities to live more independent and fulfilled lives.

Minstead Lodge Conference Venue provides training in hospitality and catering for people with learning disabilities, while horticulture students tend the Victorian walled vegetable garden to provide fresh seasonal vegetables for conference lunches.

**Each event booking at Minstead Lodge supports the work of Minstead Trust.**



© Charly Woodhouse Photography



**For all booking enquires contact:**

- ☎ 023 8081 7146
- @ events@minsteadlodge.org.uk
- @ [www.minsteadlodge.org.uk](http://www.minsteadlodge.org.uk)

Minstead Lodge • Seaman's Lane • Minstead • Lyndhurst • SO43 7FT

For more information about Minstead Trust, please visit [www.minsteadtrust.org.uk](http://www.minsteadtrust.org.uk)





Minstead Lodge .

# How to find us

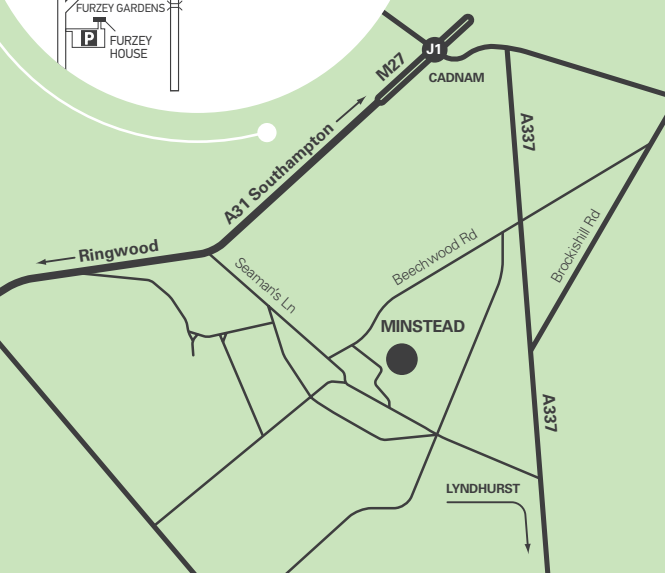
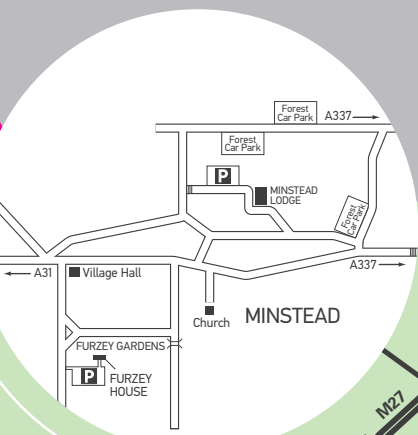
MINSTEAD LODGE • SEAMAN'S LANE  
MINSTEAD • LYNDHURST • SO43 7FT

☎ 023 8081 2297

@ weddings@minsteadlodge.org.uk

WWW.MINSTEADLODGE.ORG.UK

*Minstead Lodge is a social enterprise of Minstead Trust,  
charity number 1053319. VAT number 287 5996 22*



PLENTY OF  
FREE PARKING  
ON SITE

LOCAL  
ACCOMMODATION  
SUGGESTIONS

FLEXIBLE  
AND PERSONAL  
APPROACH



Minstead  
Lodge .



# Weddings

AT MINSTEAD LODGE

© KN photography

Bespoke Country House  
Wedding Venue  
in the New Forest



*'Dorset Dubhire' © Charly Woodhouse Photography*

*© Sam Gbasai*



MINSTEAD • LYNDHURST • SO43 7FT

[weddings@minsteadlodge.org.uk](mailto:weddings@minsteadlodge.org.uk)

[WWW.MINSTEADLODGE.ORG.UK](http://WWW.MINSTEADLODGE.ORG.UK)

© KN photography



# Minstead Lodge

Your exclusive Country House wedding venue in the Forest. A hidden gem, nestled at the edge of Minstead Village, just minutes from the M27.

Give your wedding authentic charm in relaxed, tranquil surroundings; full of character and an inspirational story (ask us!).

Our Oak panelled Long Hall is perfect for your ceremony, wedding breakfast or evening party. It opens out onto glorious woodland views from the South Terrace, for your drinks reception.

Two Bay Windowed reception rooms offer options for smaller ceremonies, drinks, buffets, chill out rooms or bar.

Minstead Lodge provides hospitality training and work experience for people with learning disabilities. All of our income supports this work. This means that your wedding will make an amazing difference to someone's life.

GRAND  
STAIRCASE AND  
GROUNDS FOR  
YOUR EXCLUSIVE  
WEDDING  
PHOTOS

WEDDINGS@MINSTEADLODGE.ORG.UK



GET IN TOUCH  
TO ARRANGE  
YOUR VIEWING  
OR FOR A  
BESPOKE  
QUOTE

Exclusive use of Minstead Lodge Reception Rooms is £4500\* (including VAT), including a wedding PA on the day to ensure everything runs seamlessly.

This includes use of three beautiful reception rooms (seated capacity 75), terrace woodland views, and our marquee site. Exclusive use of the grand staircase and grounds for Bride and Groom photos. Tables, chairs, table linen and napkins all included. Access on the day before to set up and decorate.

Our catering partners offer a range of options to tailor your wedding breakfast to your requirements.

\* Low season offers available



Our special Minstead Lodge wedding packages (inclusive of VAT), each include three hours venue hire, with in-house catering. These can be combined to build your dream wedding day.

Bespoke options also available – please get in touch to discuss.

## Tie the Knot

Hold your ceremony in the beautiful Congleton Room, with private photos in our stunning grounds. Celebrate with a glass of prosecco and canapés.

**£35 per person**  
(45 people)

## Time for tea

Make a change from a traditional wedding breakfast and enjoy a sumptuous Afternoon Tea with a glass of Fizz.

**£30 per person**  
(minimum 50 people)

© Charly Woodhouse Photography

© Ann Aveyard Photography





Minstead Trust

Furzey  
Gardens .



UNLIMITED  
FREE ACCESS  
TO FURZEY  
GARDENS

# *Furzey House Holiday Cottage*

Six Bedroom Thatched Cottage set in  
the heart of Furzey Gardens, New Forest.

**SLEEPS 10.**

Furzey House is set in a private area within the grounds of the beautiful Furzey Gardens, offering all the charm of a secluded Forest break in the most tranquil and peaceful of settings.

All the delights of Furzey Gardens are literally on your doorstep and guests have unlimited free access to the Gardens throughout their stay.



Furzey House is full of character with a snug, spacious breakfast room, fitted kitchen and lounges downstairs, opening onto a private terrace. Six upstairs bedrooms (4 ensuite) sleep 10 people.

Minutes from Minstead Village, less than 4 miles to Lyndhurst, and only 5 minutes from the M27, Furzey House is a perfect base from which to explore the New Forest or to just relax and unwind in the most beautiful location you can imagine. This is also a fantastic area for those who enjoy walking and cycling, with access directly from the house onto miles of interesting New Forest cycle tracks and paths.

**Prices from £1000 – £1750 a week.**



SHORT BREAKS  
ARE ALSO  
AVAILABLE

## Why Furzey House?

Furzey House is owned by Minstead Trust, a charity providing hospitality training and work experience to people with learning disabilities. Every booking supports the work of Minstead Trust, which you can find out more about at [www.minsteadtrust.org.uk](http://www.minsteadtrust.org.uk).

For more information visit [www.furzey-gardens.org](http://www.furzey-gardens.org).

To arrange a booking:

 023 8081 7146

 [events@minsteadlodge.org.uk](mailto:events@minsteadlodge.org.uk)

Furzey Gardens • School Lane • Minstead • Lyndhurst • SO43 7GL

*Furzey Gardens is a social enterprise of Minstead Trust,  
charity number 1053319. VAT number 287 5996 22*