

Help secure their future with a gift in your will





Your gift can change their future

Thank you for your interest in leaving a gift in your will to Minstead Trust.

A gift of any size in your will can make a real lasting difference to people with learning disabilities. It will help us to do even more to help people learn work skills, have a secure home, make friends and live their lives to the fullest. You can help them achieve their aims and reach their potential.

Minstead Trust is a friendly, local charity where your gift will be hugely appreciated and will make a big impact.

We know that you may have questions about the process of making a will and leaving a gift to Minstead Trust and where your gift might be used.

We hope this guide will help you and if you have any other questions please get in touch with our fundraising team.

Adam Dodd
Chief Executive

Speak to us:

02380 812297

fundraising@minsteadtrust.org.uk



A man with Down syndrome is shown from the chest up, smiling warmly at the camera. He is wearing a dark blue zip-up jacket over a light blue t-shirt. He is leaning over a black plastic seedling tray filled with dark brown soil. His hands are visible, and he appears to be tending to the soil. The background is a soft-focus outdoor scene with green foliage.

Your gift
can help us
to continue to
live happy,
healthy lives.



'I am happy, Minstead Trust helps me.'



Gemma and Isabel have lived together in one of our supported living houses for six years. They are great friends and really enjoy living together.

Isabel attends day opportunities at Minstead Lodge in the New Forest and her favourite activity is looking after the animals, there are donkeys, goats and geese to be cared for. She loves working with the animals and works really hard. She also really enjoys getting stuck in with arts and crafts, especially ceramics and textiles. Isabel likes to be busy!

Isabel is supported by Minstead Trust staff to achieve her life goals, one of which recently was using routines at home to help her get ready for her activities, which has helped make things easier for her.

Isabel said: 'I am happy living at Rushington. I like doing animal care. Minstead Trust also helps me go on holidays.'

Gemma also attends day opportunities at Minstead Lodge and loves getting involved with a range of things, such as woodwork, the vegetable

garden, and animal care - Gemma is great at pottery and ceramics.

One thing that Gemma wants particular help with is to achieve greater independence using public transport. This is a goal that she has identified and Minstead Trust staff are helping her achieve this. It means she can go to activities such as Zumba by taxi, which are important for her health and wellbeing.

Gemma said 'Minstead Trust helps me do gardening, helps me sort my money, helps me do the shopping and go to Zumba. I like living at Rushington.'

**Leaving a gift in your will
can help us to continue
supporting people like
Gemma and Isabel to
work towards their goals.**



Making a will: what you need to know

Why do I need a will?

A will is one of the most important documents that you will write. It is the way to make sure that the people and the causes you care about are looked after, you can also decide what happens to your money and your possessions.

I have a will already, do I need to update it?

It's a good idea to review your will to make sure it still reflects your wishes, especially if your personal circumstances have changed.

What happens if I don't have a will?

If you do not have a will or if your will is not valid (e.g. incorrectly written, witnessed or signed), your estate is said to be 'intestate'. This means that what you want to happen, may not be carried out, such as who will inherit your estate and possessions and how people who are dependent on you are going to be looked after. Having a professionally written, up to date will is the best way to make sure your requests are met.

Who should write or update my will?

You can use a professional will-writer or solicitor to write or update your will to ensure it is valid and witnessed. Depending upon your circumstances you may need to consult with other professionals such as estate or trust planners. If you are the carer, guardian or parent of someone who relies on you for managing, supporting or paying for their care you will want to make sure that your wishes concerning their ongoing care are carried out.

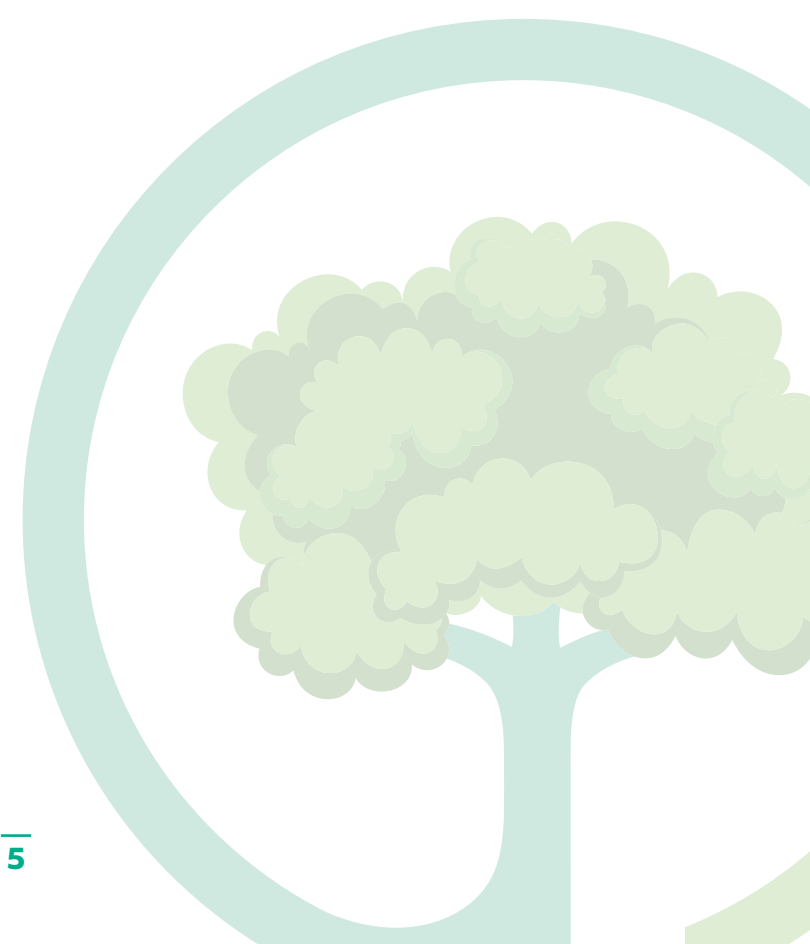
I am a carer for someone with a learning disability who should I contact about my will?

You may need to consult a specialist such as an estate or trust planner to ensure that your estate is treated in the right way so that the ongoing care for your dependents is properly considered and managed.

I'm thinking about leaving a gift in my will to Minstead Trust. Who should I contact?

We would be very pleased to answer any questions you might have.

Visit www.minsteadtrust.org.uk/giving or email fundraising@minsteadtrust.org.uk





'Minstead Trust helped me get a job at Paulton's Park theme park in the restaurant, it's going really brilliant. I do it Friday and Sunday and I may be able to do more days. It is my very first paid job.'

Rhianne was helped through Minstead Trust's Step Up For Work programme.

Leaving a gift in your will can help others like Rhianne be supported on the **Step Up For Work** programme to help them get training and find a job with a supportive employer.



Where could my gift help?

Step Up For Work

Helping people with learning disabilities get training and work.

This programme needs ongoing funding to give people with learning disabilities greater independence by helping them into paid employment.



Furzey Gardens

Keep the gardens special and be a place of work and training for the learning disability work experience team who maintain the gardens all year round. Your gift could help us look after the gardens so that generations of visitors can continue to enjoy this special place.

Community theatre

Your gift could allow more people to make friends and build confidence by attending community theatre sessions at Hanger Farm Arts Centre, while also keeping the arts centre at the heart of the local community for everyone to enjoy.



Wellbeing support

Help fund sessions, equipment and buddies to ensure that people with learning disabilities are supported to take on activities that improve their wellbeing.



Take the next step

Do something amazing and leave a gift in your will to Minstead Trust.
Make a free will online now at www.minsteadtrust.org.uk/giving

Can we help answer any questions?

Email fundraising@minsteadtrust.org.uk or call **02380 812297**



Minstead Lodge, Minstead, Lyndhurst SO43 7FT

Minstead Trust is a charitable company registered in England and Wales, registered number 03149116.

Registered charity number: 1053319. VAT number: 287 5996 22

